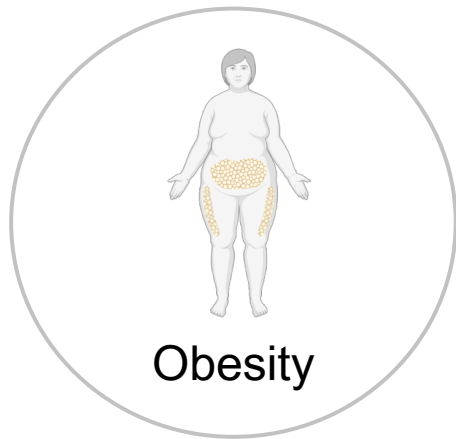
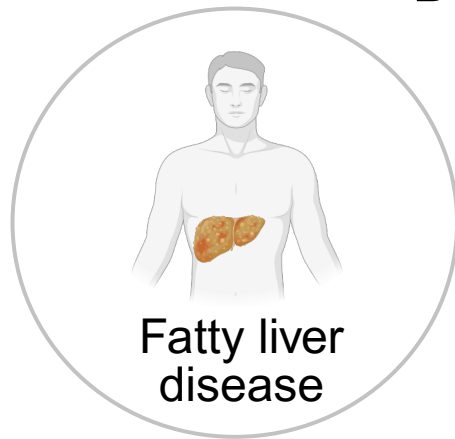


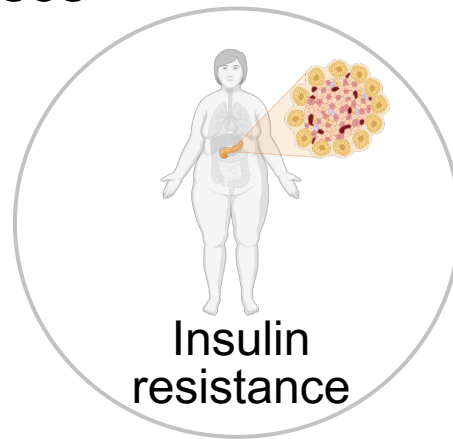
Diseases



Obesity



Fatty liver disease

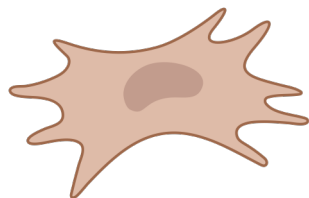


Insulin resistance

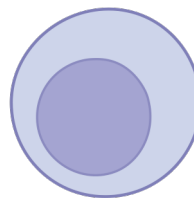


Gestational diabetes

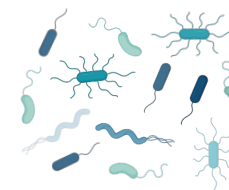
Stromal cell



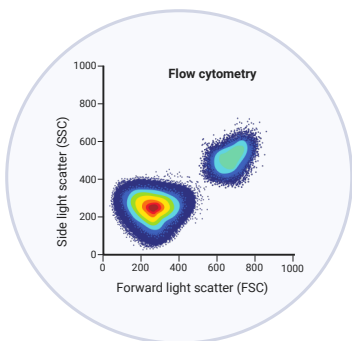
Tissue-resident immune cell



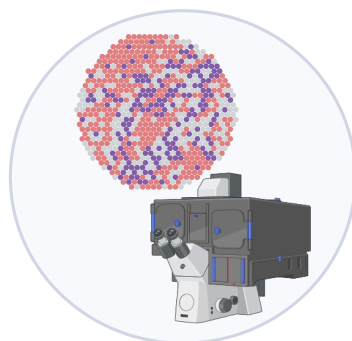
Gut microbiota



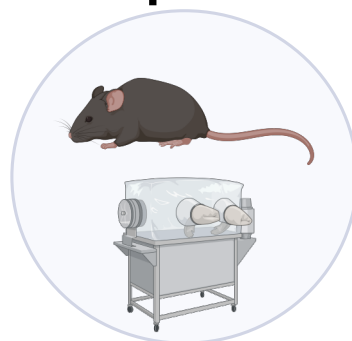
Techniques



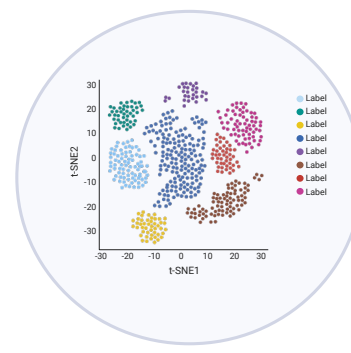
Flow/mass cytometry
Immune cell heterogeneity



3D volumetric imaging
Spatial transcriptomics
Stromal-immune topography



in vivo models
Functional assessment



(single-cell) RNA-seq
Transcriptional state



Clinical metadata
Blood samples
Metabolic characterization